

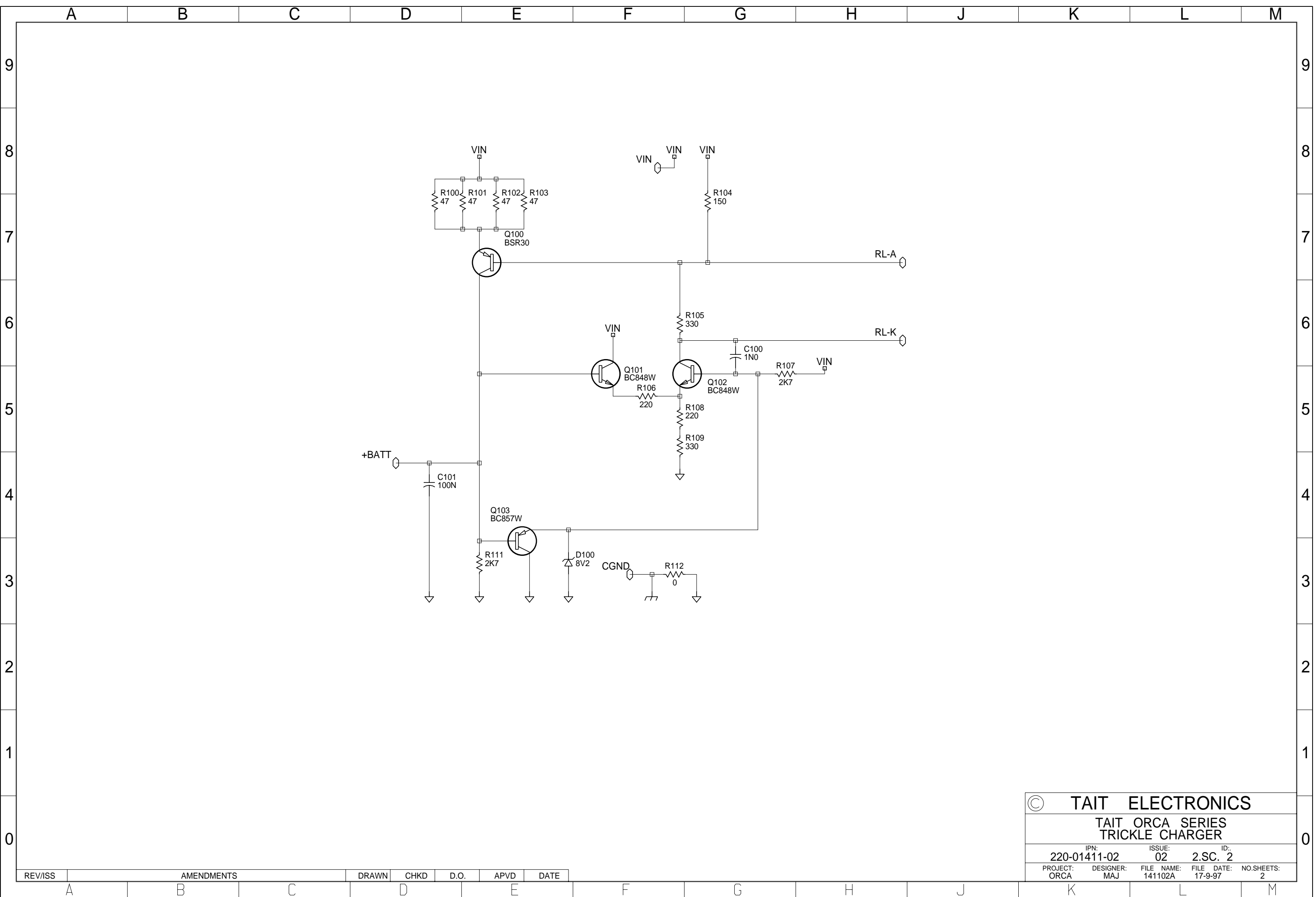
© **TAIT ELECTRONICS**

TAIT ORCA SERIES FAST CHARGER

IPN: 220-01411-02 ISSUE: 02 ID: 2.SC. 1

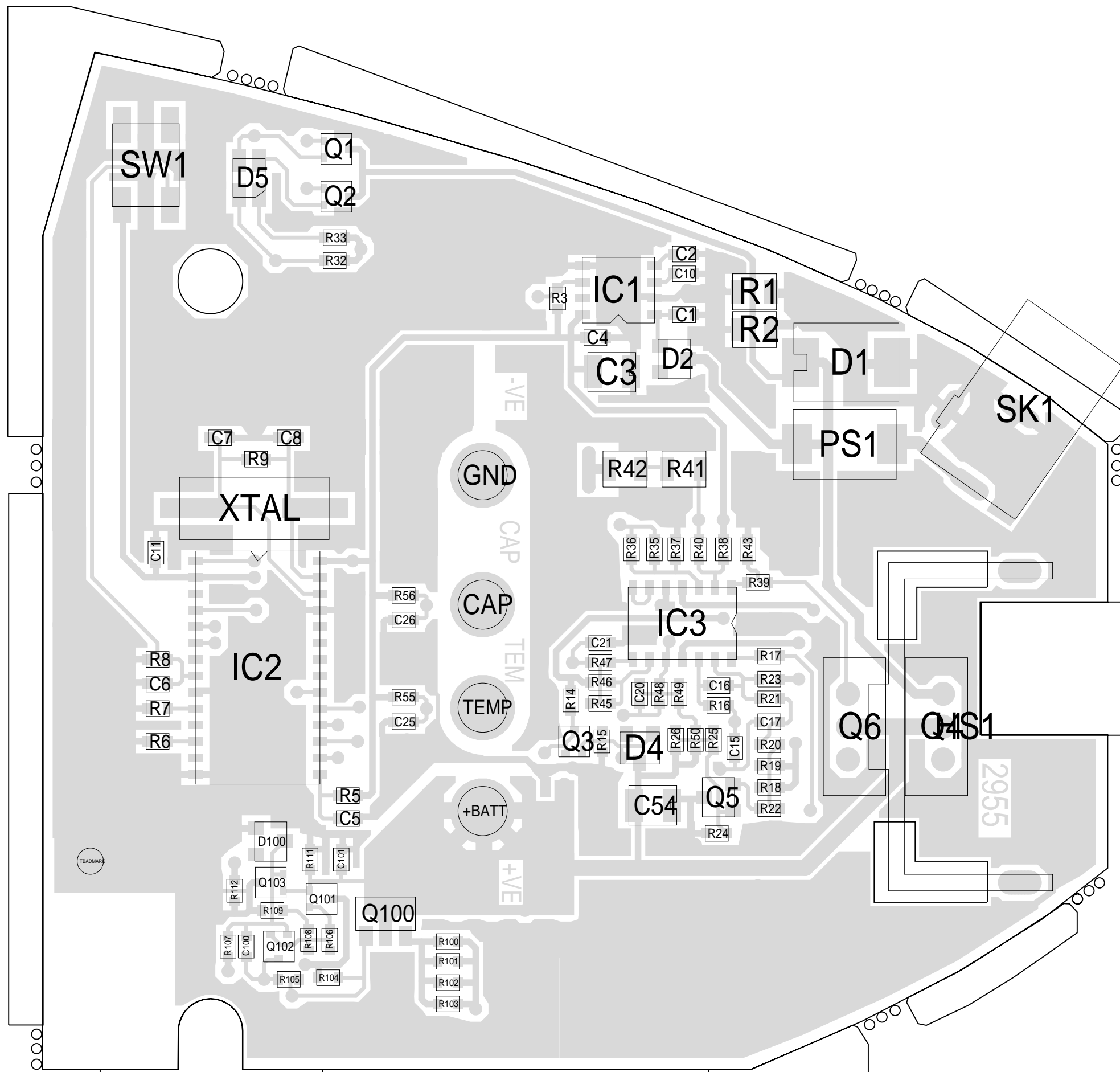
PROJECT: ORCA DESIGNER: MAJ FILE NAME: 141102A FILE DATE: 17-9-97 NO.SHEETS: 2

02 A	CHANGED ROTATION OF PCB	MAJ			1-8-97
01 A	CORRECTED CONTACTS DUE TO MECH	MAJ			22-7-97
00 A	ORIGINAL	MAJ			1-7-97
REV/ISS	AMENDMENTS	DRAWN	CHKD	D.O.	APVD DATE



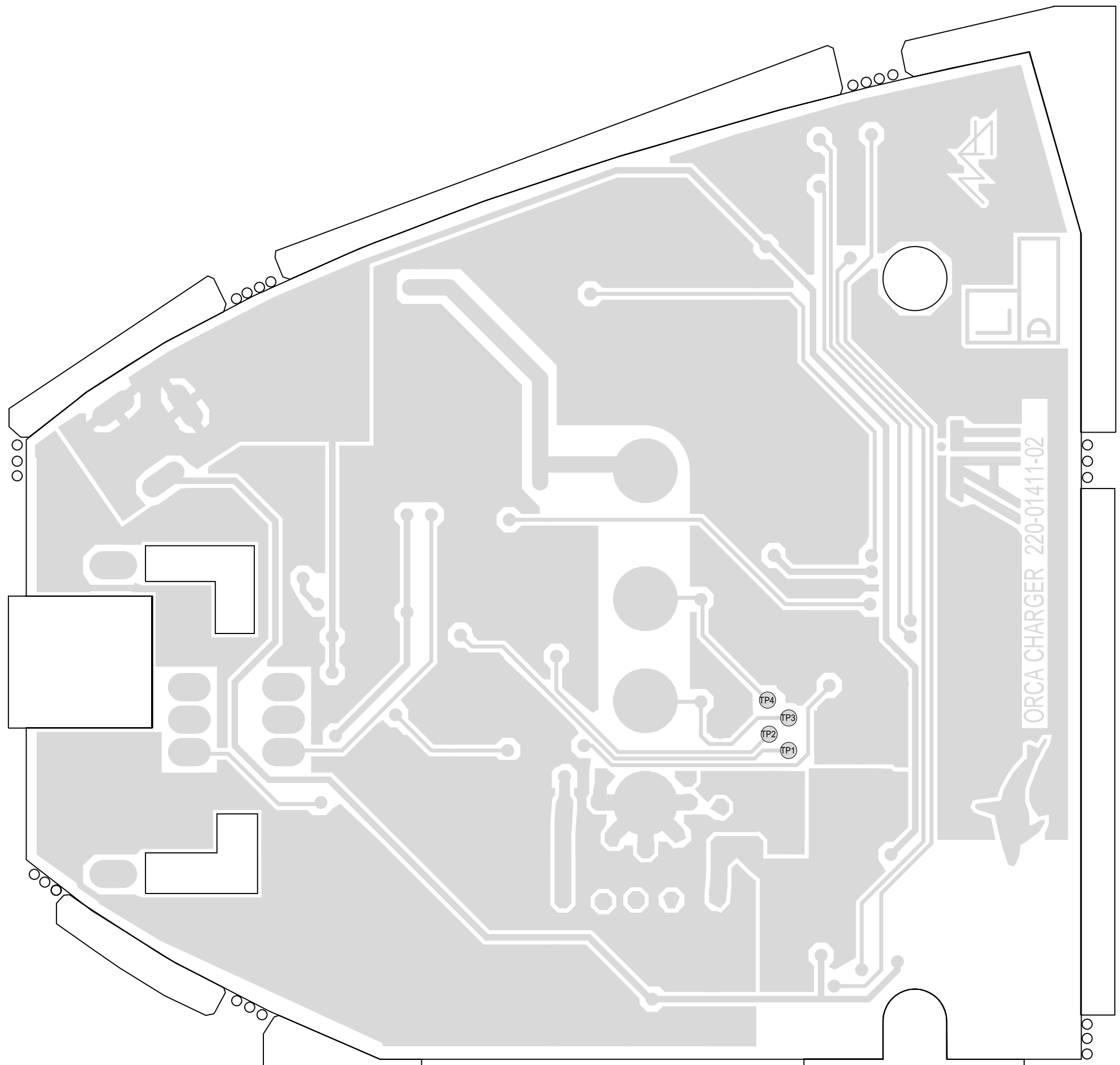
© TAIT ELECTRONICS					
TAIT ORCA SERIES TRICKLE CHARGER					
IPN:	220-01411-02	ISSUE:	02	ID:	2.SC. 2
PROJECT:	ORCA	DESIGNER:	MAJ	FILE NAME:	141102A
		FILE DATE:	17-9-97	NO. SHEETS:	2

REV/ISS	AMENDMENTS	DRAWN	CHKD	D.O.	APVD	DATE



TAIT ELECTRONICS IPN: 220-01411-02 ISS: 02 ID: 1.TA DATE: 17 Sep 1997
 CHARGER PCB LAYOUT - TOP SIDE

Scale:3:1 ; Rotation: 0 degrees



TAIT ELECTRONICS	IPN: 220-01411-02	ISS: 02	ID: 2.BA	DATE: 17 Sep 1997
CHARGER PCB LAYOUT - BOTTOM SIDE				

Scale:3:1 ; Rotation: 0 degrees